

d line

Tom Dixon
collection

FAT

FAT COOL LIFE

About



Tom Dixon

d line is a heritage Danish design brand conceiving and hand crafting enduring architectural hardware, sanitary ware and solutions for barrier-free living. Launched in 1971, the brand's ambition is to be universally known, coveted and admired for the uncompromising endurance of its design, craftsmanship and quality.

Design Research Studio is the design and innovations consultancy at the heart of Tom Dixon. The multidisciplinary team of designers, scientists, engineers, thinkers and architects collaborate with clients to design products, spaces, experiences and brands across the planet.

Working across a broad selection of projects within industrial design, interior design and branding, the studio has curated a global portfolio of projects and collaborators. Its portfolio is the source of knowledge for changes in functionality and style and is a test bed for new ideas.

Introduction

The Fat collection is a series of architectural hardware pieces designed by English industrial designer Tom Dixon. Angular and bulbous, the pieces are a testament to form following function, whilst maintaining a humorous silhouette and a reductionist aesthetic. Fat is part of a fuller series by Tom Dixon including dining chairs, bar stools and lounge chairs.

The collection comprises a lever handle, key escutcheon and thumb turn, as well as a door knocker, pull handle, flush pull and door stop. Like the rest of the d line portfolio, each piece is minimalist enough to be timeless in its design, its beauty coming from its rounded profile and inflated silhouette, rather than from superfluous details. The pieces are enduringly crafted in the highly resilient AISI 316 stainless steel preferred by d line and enhanced by a tight edit of colour finishes for different expressions in aesthetics.

“I think Fat could go in any type of high-traffic building – from nursery schools to hospitals to fashionable nightclubs. The thing is, by having very rounded ends and very grippable handles, they work in a multitude of applications.”

– Tom Dixon

Tom Dixon collection

Inflation, innovation, collaboration

Fat – a name, an aesthetic

Having applied what Tom calls a ‘Fat edge’ or ‘Fat profile’ to several different objects in development at Tom Dixon Studio, the designer had already been using the word ‘Fat’ to imply generosity and softness of form. So, with the studio’s move into architectural ironmongery, and with the same ‘inflation’ process applied to a regular handle, the name again relates. The result lacks any trace of sharpness or angularity and is a collection of pumped-up pieces that are simply ‘Fatter’ than the norm.

A new kind of design challenge

Tom Dixon describes door handles as having “a particularly difficult and hyper-functional set of challenges, because they’ve evolved rather than being designed.” He observes that often designer handles are less functional than traditional ones, because a handle is something with which there’s little to be done to affect the aesthetic beyond what’s come before. The challenge for him and his studio, therefore, has been the creation of something that functions well, yet looks distinctively different from what’s already out there.

Colour and finish: beyond stainless steel

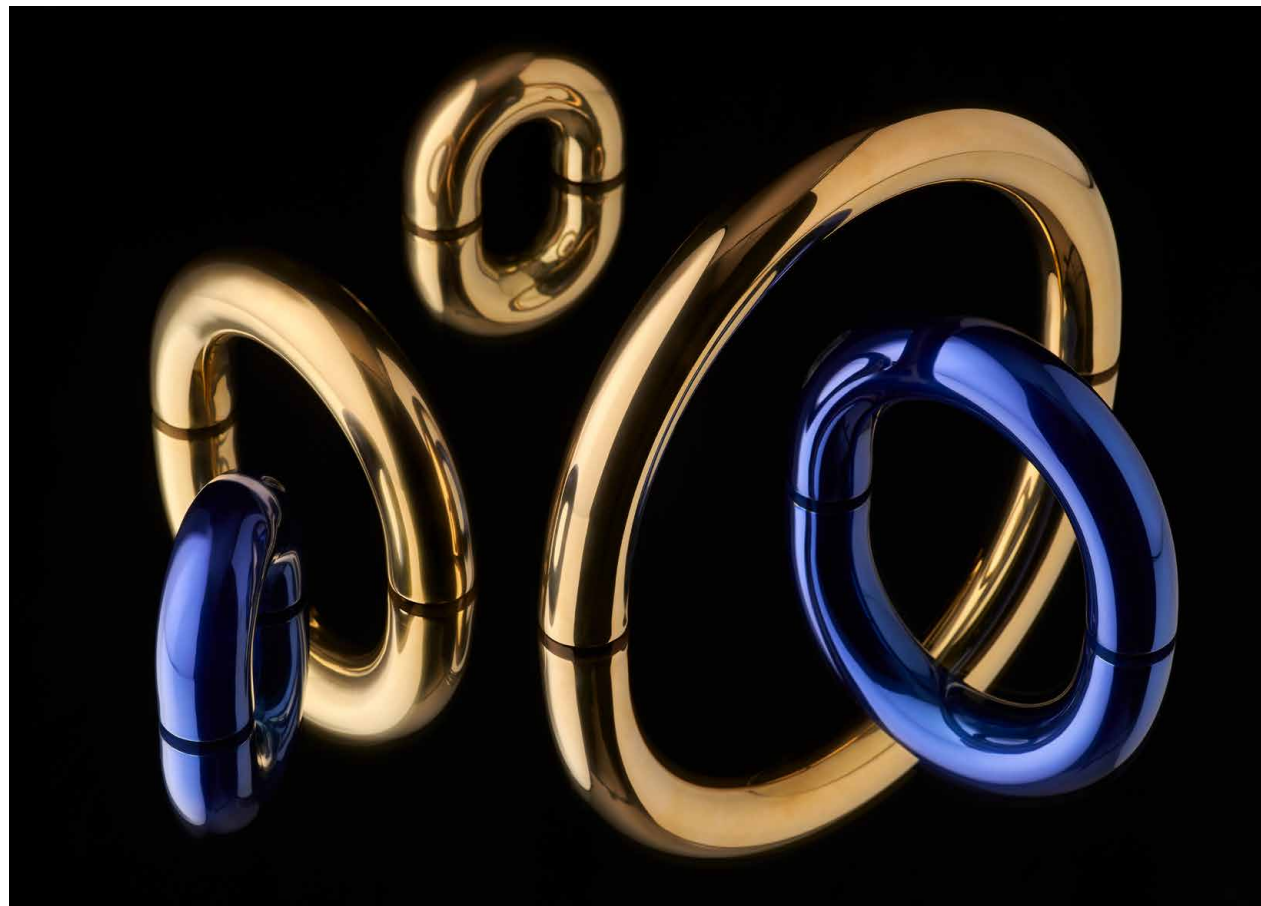
New collections tend to be launched in stainless steel, both for its practicality and universality. But when Design Research Studio lined up finish and colour samples for Fat, they loved them all. Satin stainless steel is joined by polished brass, as well as electric blue and PVD charcoal – the team saw that with this palette of materials and colours in play, the collection addressed many different project types because of the way each changes the character of the pieces.



“d line has a phenomenal history, and we’re honoured to be a part of its illustrious series of architectural design handles. Our brand principles also align very closely with d line’s: the emphasis on quality, endurance, innovation and sustainability. We’re pleased to be the first designer outside Denmark to have a collaboration with the brand.”

– Tom Dixon

Considering d line’s renowned streamlined aesthetic, the collaboration with Tom Dixon is a bold move. The Fat Collection is a new exploration for d line that disrupts a product category otherwise considered straight-forward and conservative. This is why making a bold statement in both silhouette and colour palette could only happen in partnership with one of the greatest designers of our time.



FAT
COLLECTION



Fat lever handle

Item number	Description	Dimension
9500070001	Satin stainless steel	87x51x24 mm, Ø70x17.5 mm rose
9500070002	PVD charcoal	87x51x24 mm, Ø70x17.5 mm rose
9500070003	Electric blue	87x51x24 mm, Ø70x17.5 mm rose
9500070004	Polished brass	87x51x24 mm, Ø70x17.5 mm rose



Fat key escutcheon

Item number	Description	Dimension
9500090001	W key hole, satin stainless steel	Ø27x75 mm, Ø70x17.5 mm rose
9500090002	W key hole, PVD charcoal	Ø27x75 mm, Ø70x17.5 mm rose
9500090003	W key hole, electric blue	Ø27x75 mm, Ø70x17.5 mm rose
9500090004	W key hole, polished brass	Ø27x75 mm, Ø70x17.5 mm rose



Fat toilet indicator

Item number	Description	Dimension
9500030001	5/8" w/o satin stainless steel	CC30 mm, Ø70x17.5 mm rose
9500030002	5/8" w/o PVD charcoal	CC30 mm, Ø70x17.5 mm rose
9500030003	5/8" w/o electric blue	CC30 mm, Ø70x17.5 mm rose
9500030004	5/8" w/o polished brass	CC30 mm, Ø70x17.5 mm rose
9500030005	5/8" w/ satin stainless steel	CC38 mm, Ø70x17.5 mm rose
9500030006	5/8" w/ PVD charcoal	CC38 mm, Ø70x17.5 mm rose
9500030007	5/8" w/ electric blue	CC38 mm, Ø70x17.5 mm rose
9500030008	5/8" w/ polished brass	CC38 mm, Ø70x17.5 mm rose
9500030009	5/8" w/o toilet indicator, satin stainless steel	CC30 mm, Ø70x17.5 mm rose
9500030010	5/8" w/o toilet indicator, PVD charcoal	CC30 mm, Ø70x17.5 mm rose
9500030011	5/8" w/o toilet indicator, electric blue	CC30 mm, Ø70x17.5 mm rose
9500030012	5/8" w/o toilet indicator, polished brass	CC30 mm, Ø70x17.5 mm rose
9500030013	5/8" w/ toilet indicator, satin stainless steel	CC38 mm, Ø70x17.5 mm rose
9500030014	5/8" w/ toilet indicator, PVD charcoal	CC38 mm, Ø70x17.5 mm rose
9500030015	5/8" w/ toilet indicator, electric blue	CC38 mm, Ø70x17.5 mm rose
9500030016	5/8" w/ toilet indicator, polished brass	CC38 mm, Ø70x17.5 mm rose



Fat thumb turn

Item number	Description	Dimension
9500020001	Satin stainless steel	CC27x50.8 mm, Ø70x17.5 mm rose
9500020002	PVD charcoal	CC27x50.8 mm, Ø70x17.5 mm rose
9500020003	Electric blue	CC27x50.8 mm, Ø70x17.5 mm rose
9500020004	Polished brass	CC27x50.8 mm, Ø70x17.5 mm rose



Fat pull handle S

Item number	Description	Dimension
9500060010	Thread, satin stainless steel	70x50x35 mm
9500060011	Thread, PVD charcoal	70x50x35 mm
9500060012	Thread, electric blue	70x50x35 mm
9500060013	Thread, polished brass	70x50x35 mm
9500060014	Bush, satin stainless steel	70x50x35 mm
9500060015	Bush, PVD charcoal	70x50x35 mm
9500060016	Bush, electric blue	70x50x35 mm
9500060017	Bush, polished brass	70x50x35 mm



Fat pull handle M

Item number	Description	Dimension
9500060018	Thread, satin stainless steel	140x100x35 mm
9500060019	Thread, PVD charcoal	140x100x35 mm
9500060020	Thread, electric blue	140x100x35 mm
9500060021	Thread, polished brass	140x100x35 mm
9500060022	Bush, satin stainless steel	140x100x35 mm
9500060023	Bush, PVD charcoal	140x100x35 mm
9500060024	Bush, electric blue	140x100x35 mm
9500060025	Bush, polished brass	140x100x35 mm



Fat pull handle L

Item number	Description	Dimension
9500060026	Thread, satin stainless steel	210x150x35 mm
9500060027	Thread, PVD charcoal	210x150x35 mm
9500060028	Thread, electric blue	210x150x35 mm
9500060029	Thread, polished brass	210x150x35 mm
9500060030	Bush, satin stainless steel	210x150x35 mm
9500060031	Bush, PVD charcoal	210x150x35 mm
9500060032	Bush, electric blue	210x150x35 mm
9500060033	Bush, polished brass	210x150x35 mm



Fat flush pull handle, oval

Item number	Description	Dimension
9500040001	Satin stainless steel	140x70x25 mm
9500040002	PVD charcoal	140x70x25 mm
9500040003	Electric blue	140x70x25 mm
9500040004	Polished brass	140x70x25 mm



Fat flush pull handle, round

Item number	Description	Dimension
9500040005	Satin stainless steel	70x25 mm
9500040006	PVD charcoal	70x25 mm
9500040007	Electric blue	70x25 mm
9500040008	Polished brass	70x25 mm



Fat door stop

Item number	Description	Dimension
9500040009	Satin stainless steel	65x45 mm
9500040010	PVD charcoal	65x45 mm
9500040011	Electric blue	65x45 mm
9500040012	Polished brass	65x45 mm



Fat PZ cylinder escutcheon

Item number	Description	Dimension
9500030017	Internal, 6 mm, satin stainless steel	CC30x50 mm, Ø70x17.5 mm rose
9500030018	Internal, 6 mm, PVD charcoal	CC30x50 mm, Ø70x17.5 mm rose
9500030019	Internal, 6 mm, electric blue	CC30x50 mm, Ø70x17.5 mm rose
9500030020	Internal, 6 mm, polished brass	CC30x50 mm, Ø70x17.5 mm rose
9500030021	Internal, 8 mm, satin stainless steel	CC35x50 mm, Ø70x17.5 mm rose
9500030022	Internal, 8 mm, PVD charcoal	CC35x50 mm, Ø70x17.5 mm rose
9500030023	Internal, 8 mm, electric blue	CC35x50 mm, Ø70x17.5 mm rose
9500030024	Internal, 8 mm, polished brass	CC35x50 mm, Ø70x17.5 mm rose
9500030025	External, 6 mm, satin stainless steel	CC30x50 mm, Ø70x17.5 mm rose
9500030026	External, 6 mm, PVD charcoal	CC30x50 mm, Ø70x17.5 mm rose
9500030027	External, 6 mm, electric blue	CC30x50 mm, Ø70x17.5 mm rose
9500030028	External, 6 mm, polished brass	CC30x50 mm, Ø70x17.5 mm rose
9500030029	External, 8 mm, satin stainless steel	CC35x50 mm, Ø70x17.5 mm rose
9500030030	External, 8 mm, PVD charcoal	CC35x50 mm, Ø70x17.5 mm rose
9500030031	External, 8 mm, electric blue	CC35x50 mm, Ø70x17.5 mm rose
9500030032	External, 8 mm, polished brass	CC35x50 mm, Ø70x17.5 mm rose
9500030033	External, 11 mm, satin stainless steel	CC38 mm, Ø70x17.5 mm rose
9500030034	External, 11 mm, PVD charcoal	CC38 mm, Ø70x17.5 mm rose
9500030035	External, 11 mm, electric blue	CC38 mm, Ø70x17.5 mm rose
9500030036	External, 11 mm, polished brass	CC38 mm, Ø70x17.5 mm rose



Fat scandinavian cylinder escutcheon

Item number	Description	Dimension
9500030037	Internal, 6 mm, satin stainless steel	CC30x50 mm, Ø70x14 mm rose
9500030038	Internal, 6 mm, PVD charcoal	CC30x50 mm, Ø70x14 mm rose
9500030039	Internal, 6 mm, electric blue	CC30x50 mm, Ø70x14 mm rose
9500030040	Internal, 6 mm, polished brass	CC30x50 mm, Ø70x14 mm rose
9500030041	External, 6 mm, satin stainless steel	CC30x50 mm, Ø70x14 mm rose
9500030042	External, 6 mm, PVD charcoal	CC30x50 mm, Ø70x14 mm rose
9500030043	External, 6 mm, electric blue	CC30x50 mm, Ø70x14 mm rose
9500030044	External, 6 mm, polished brass	CC30x50 mm, Ø70x14 mm rose
9500030045	Internal, 8 mm, satin stainless steel	CC35x50 mm, Ø70x14 mm rose
9500030046	Internal, 8 mm, PVD charcoal	CC35x50 mm, Ø70x14 mm rose
9500030047	Internal, 8 mm, electric blue	CC35x50 mm, Ø70x14 mm rose
9500030048	Internal, 8 mm, polished brass	CC35x50 mm, Ø70x14 mm rose
9500030049	External, 8 mm, satin stainless steel	CC35x50 mm, Ø70x14 mm rose
9500030050	External, 8 mm, PVD charcoal	CC35x50 mm, Ø70x14 mm rose
9500030051	External, 8 mm, electric blue	CC35x50 mm, Ø70x14 mm rose
9500030052	External, 8 mm, polished brass	CC35x50 mm, Ø70x14 mm rose
9500030053	Internal, 12 mm, satin stainless steel	CC30 mm, Ø70x19 mm rose
9500030054	Internal, 12 mm, PVD charcoal	CC30 mm, Ø70x19 mm rose
9500030055	Internal, 12 mm, electric blue	CC30 mm, Ø70x19 mm rose
9500030056	Internal, 12 mm, polished brass	CC30 mm, Ø70x19 mm rose
9500030057	External, 12 mm, satin stainless steel	CC30 mm, Ø70x19 mm rose
9500030058	External, 12 mm, PVD charcoal	CC30 mm, Ø70x19 mm rose
9500030059	External, 12 mm, electric blue	CC30 mm, Ø70x19 mm rose
9500030060	External, 12 mm, polished brass	CC30 mm, Ø70x19 mm rose
9500030061	Internal, 16 mm, satin stainless steel	CC30 mm, Ø70x22 mm rose
9500030062	Internal, 16 mm, PVD charcoal	CC30 mm, Ø70x22 mm rose
9500030063	Internal, 16 mm, electric blue	CC30 mm, Ø70x22 mm rose
9500030064	Internal, 16 mm, polished brass	CC30 mm, Ø70x22 mm rose
9500030065	External, 16 mm, satin stainless steel	CC30 mm, Ø70x24 mm rose
9500030066	External, 16 mm, PVD charcoal	CC30 mm, Ø70x24 mm rose
9500030067	External, 16 mm, electric blue	CC30 mm, Ø70x24 mm rose
9500030068	External, 16 mm, polished brass	CC30 mm, Ø70x24 mm rose
9500030069	Internal, 21 mm, satin stainless steel	CC30 mm, Ø70x27 mm rose
9500030070	Internal, 21 mm, PVD charcoal	CC30 mm, Ø70x27 mm rose
9500030071	Internal, 21 mm, electric blue	CC30 mm, Ø70x27 mm rose
9500030072	Internal, 21 mm, polished brass	CC30 mm, Ø70x27 mm rose

Fat door knocker

Item number	Description	Dimension
9500030073	Satin stainless steel	140x104x40 mm
9500030074	PVD charcoal	140x104x40 mm
9500030075	Electric blue	140x104x40 mm
9500030076	Polished brass	140x104x40 mm

Tom Dixon collection

The Fat collection is available in charcoal, electric blue, polished brass, as well as satin stainless steel.

As with most of our products, this collection is sustainably produced in non-corrosive AISI 316 stainless steel, as the strongest, most hard wearing steel for these types of purposes.

Today our commitment to sustainability exists as a 20-year product guarantee, and a five-year guarantee on the colour finish. This commitment extends to responsible sourcing of our steel, to low-emission hand assembly and to a lean factory that never produces more than what is needed.



d line

d line

Roskildevej 22
2620 Albertslund
Denmark

T +45 72 17 01 38
E info@dline.com

dline.com